

# APPLICATION NOTE

## SHARING INTELLIGENT SOLUTIONS

**KEY WORDS:**

<b>Title:</b>	Light Level Sensor Function
<b>Products Applicable:</b>	5031PE

The Light Level Sensor (SENLL) is a C-Bus input device that measures the ambient light levels and converts this information into messages sent across the C-Bus Network. C-Bus Output Units can be configured to respond to such messages, allowing automatic regulation and control of lighting levels.

There are three functions that the unit can perform:-

- **Light Level** function
- **Light On/Off** function
- **Light On/Off** function

Each of which can have a group address assigned to it (**Light Level, Light On/Off** and **Enable Group**) as shown in Figure 1 below.

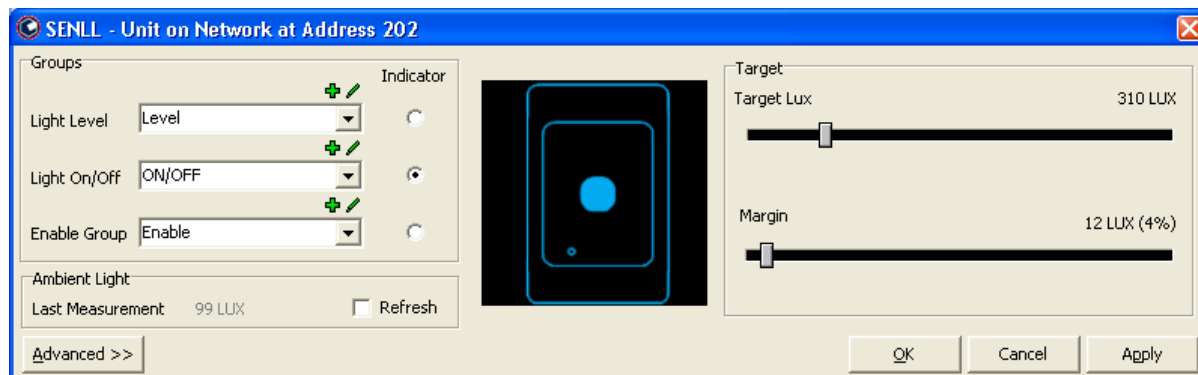


Figure 1: Light Level Sensor GUI on the C-Bus Toolkit.

1. **Light Level** function -- The basic C-Bus key commands that this function issues are **ON**, **Downcycle** and **End Ramp**. This therefore means when the ambient light level (in Lux units) is below the Target Lux – Margin value, it turns the load on if the load is initially in the OFF state, and then ramps up/down to maintain the light level to achieve the Target setting. Due to the fact that the **OFF** command is not included in this function the load will never be turned off, hence once it is switched on it would only operate within the range of (1% → 100% → 1%).
2. **Light On/Off** function -- This function only uses a **Toggle** command. This therefore means when the ambient light level (in Lux units) is below the Target Lux – Margin value, it turns the load on if the load is in the OFF state. If the measured light level is above the Target Lux + Margin value it turns the load off if it was previously in the ON state.
3. **Enable Group** function -- This is used to remotely enable/disable the sensor. When this group address is turn on by another C-Bus device both the **Light Level** and **Light On/Off** functions are enabled. When an “Unused” Group is assigned then the **Light Level** and **Light On/Off** functions are always enabled.

**Note:** If the both the **Light Level** and **Light On/Off** functions contain the same Group address then only the **Light Level** function is active.

## **Technical Support and Troubleshooting**

For technical assistance call: 1300 722 247 (Australia)  
0800 888 219 (New Zealand)

CIS web site: <http://www.clipsal.com/cis/>

© Copyright Clipsal Integrated Systems Pty Ltd 2006. All rights Reserved. Clipsal Integrated Systems is a division of Clipsal Australia Pty Ltd ABN 27 007 873 529. This material is copyright under Australian and international laws. Except as permitted under the relevant law, no part of this work may be reproduced by any process without prior written permission of and acknowledgement to Clipsal Integrated Systems Pty Ltd.

Clipsal and C-Bus are registered trademarks of Clipsal Australia Pty Ltd.

The information in this document is provided in good faith. Whilst Clipsal Integrated Systems (CIS) has endeavoured to ensure the relevance and accuracy of the information, it assumes no responsibility for any loss incurred as a result of its use. CIS does not warrant that the information is fit for any particular purpose, nor does it endorse its use in applications which are critical to the health or life of any human being. CIS reserves the right to update the information at any time without notice.