

NOTE #: 06-028-1

DATE: 08 February 2006

APPLICATION NOTE

SHARING INTELLIGENT SOLUTIONS

KEY WORDS:

Title:	C-Gate Out Of Memory Error
Products Applicable:	C-Gate V2

This Application Note is written to explain how to run C-Gate with extended memory. This can solve many problems with the java error message: -

- java.lang.OutOfMemoryError <<no stack trace available>>

The following techniques will increase the resources that java uses to run C-Gate.

C-Gate Setup

The following parameters can be edited to allow C-Gate to show commands of how much of the assigned memory is being used.

From the C drive, navigate to the C-Gate folder and then to the Config folder. Inside you will find a file called C-GateConfig.txt. Open this file and find a parameter heartbeat-time=0. The 0 indicates the time period for how often C-Gate will report the memory usage. Set this to 30 (seconds) for testing.

While in the C-GateConfig.txt file, find the parameter memory-report=no and change it to yes. This means that the memory usage will be reported in C-Gate every time the heartbeat period is reached.

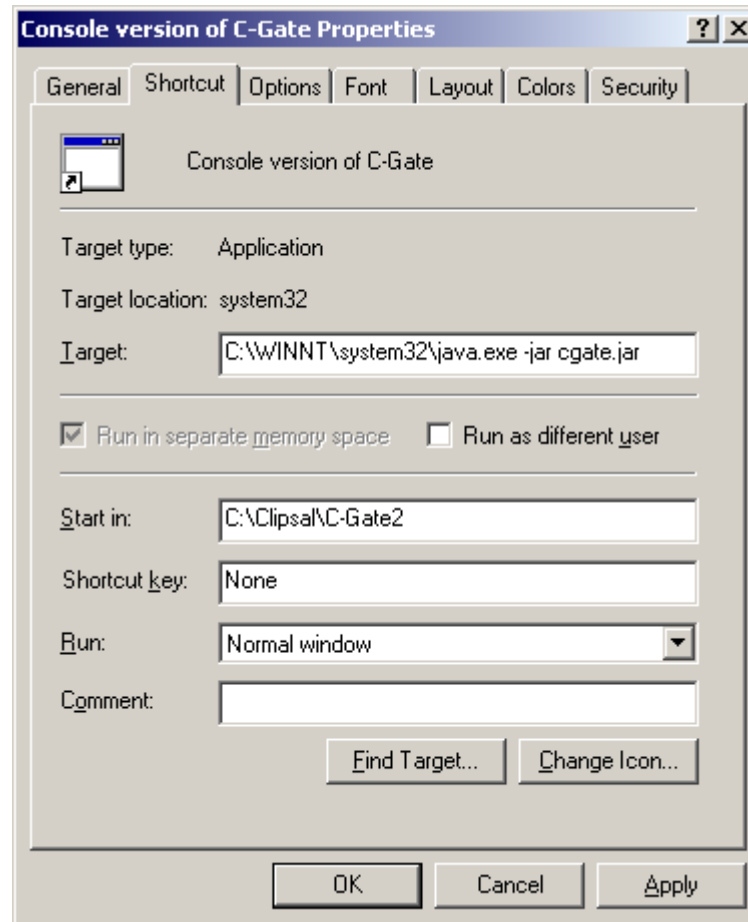
Finally, also within the C-GateConfig.txt file there is a parameter called global-event-level=5. Change this to 9, save the file and exit. C-Gate is now setup to report memory usage.

C-Gate Version

Both the C-Gate Console and Server operate by different methods. Therefore each really needs to be configured separately. If only console is used then only this method of starting has to be modified. If C-Gate is operated as a server then the other method has to be modified.

Console Version of C-Gate

Click on the Start button and navigate to the C-Gate folder. Highlight the Console Version of C-Gate. Right click on it and select the properties option. The screen below will open.



You will see the target file java.exe -jar cgate.jar. This must be modified to: -

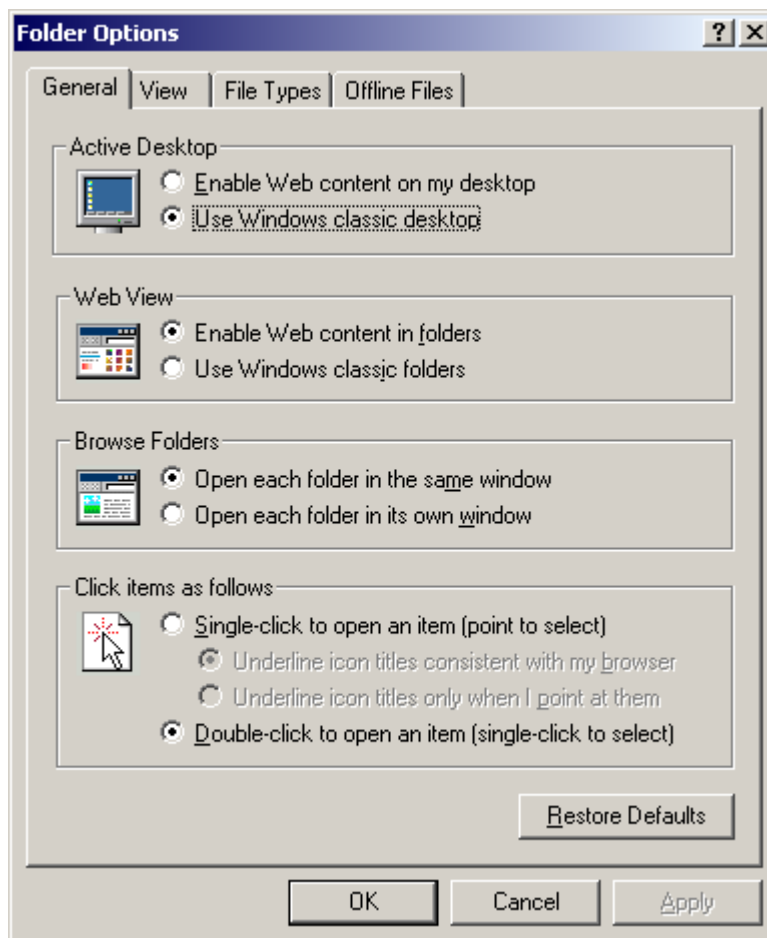
- **java.exe -Xmx100m -jar cgate.jar**

So all you are adding is the command line parameter -Xmx100m, which sets the C-Gate server to run in 100 Mbytes of memory.

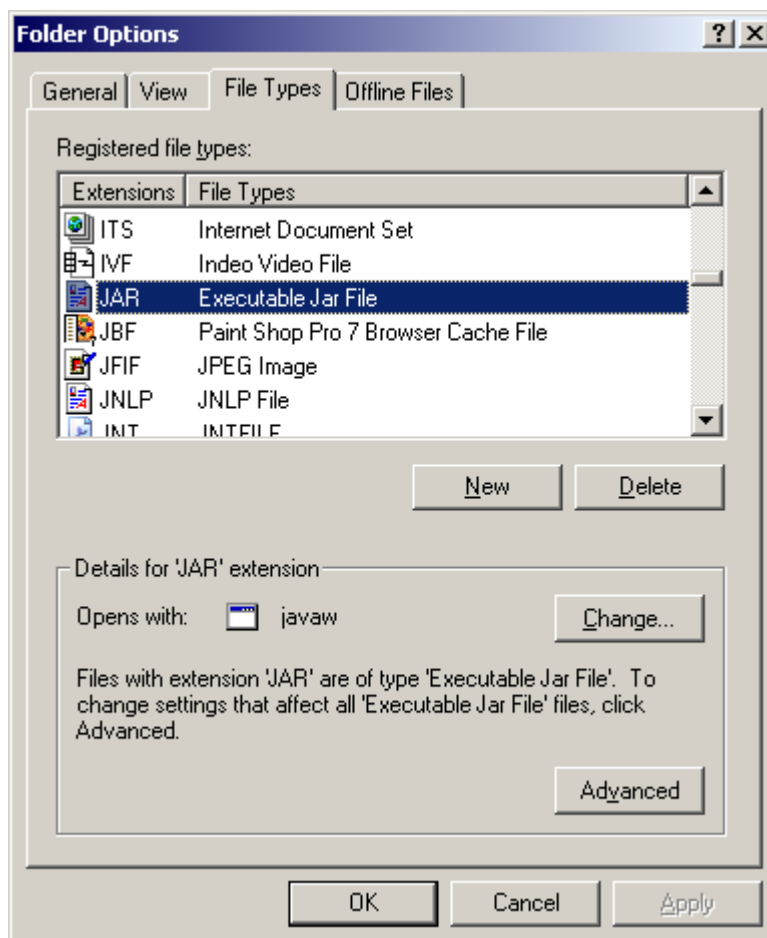
Server Version of C-Gate

The setup of the C-Gate server follows a different configuration process to the Console version of C-Gate.

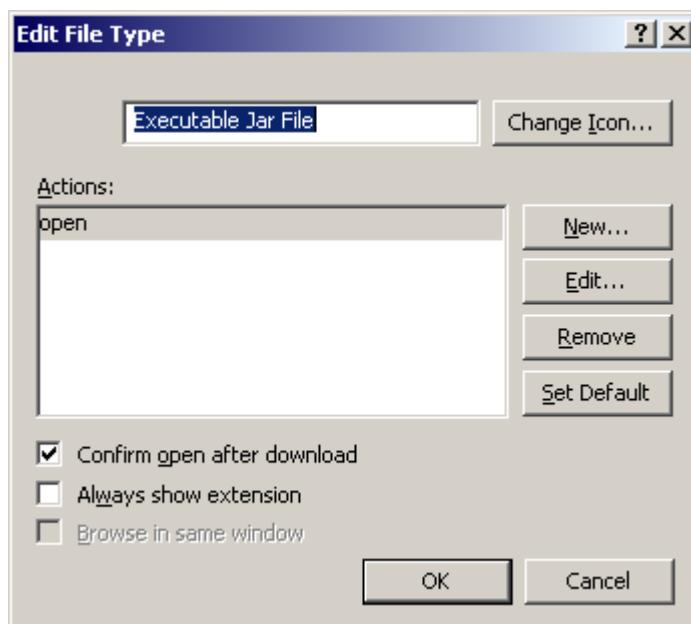
To begin the C-Gate Server configuration open Windows Explorer. In the dropdown menus at the top click on Tools and select Folder Options. The image below will then be displayed.



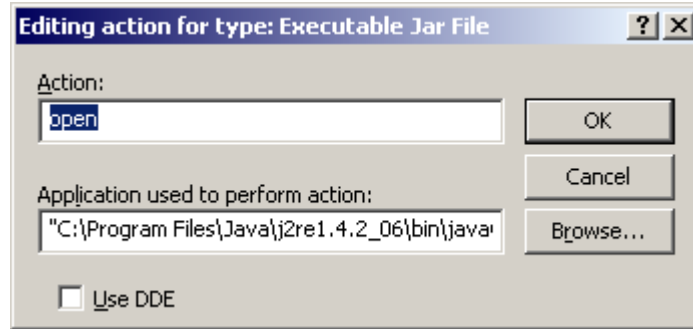
Click on the File Types tab and the screen below will appear. In the list of Registered file types, there is a Executable Jar File (shown highlighted).



Once the Jar file is highlighted, click on the advanced button and the screen shown below will appear.



Once the Edit File Type window is open, click on the Edit button and the screen shown below will appear.



In the Application used to perform action field, you will notice the target extension: -

- javaw.exe" -jar "%1" %*

Change this parameter to: -

- javaw.exe" -Xmx100m -jar "%1" %*

Now click ok until all the open windows are closed. The Server Version of C-Gate will now open with extended memory every time it is opened.

Extended Memory

When C-Gate is running with extended memory you will see it reported in the C-Gate Console or Log file. The line will look similar the one shown below: -

```
20050202-103026 793 cgate - in_use=1570688 free=4569216 tot_vm=6139904
```

Note: - The memory may vary between different PC's.

Once you have successfully changed the start up, you should remove the memory report and change memory report to no.

Technical Support and Troubleshooting

For technical assistance call: 1300 722 247 (Australia)
0800 888 219 (New Zealand)

CIS web site: <http://www.clipsal.com/cis/>

© Copyright Clipsal Integrated Systems Pty Ltd 2005. All rights Reserved. This material is copyright under Australian and international laws. Except as permitted under the relevant law, no part of this work may be reproduced by any process without prior written permission of and acknowledgement to Clipsal Integrated Systems Pty Ltd.

Clipsal and C-Bus are registered trademarks of Clipsal Australia Pty Ltd.

The information in this document is provided in good faith. Whilst Clipsal Integrated Systems (CIS) has endeavoured to ensure the relevance and accuracy of the information, it assumes no responsibility for any loss incurred as a result of its use. CIS does not warrant that the information is fit for any particular purpose, nor does it endorse its use in applications which are critical to the health or life of any human being. CIS reserves the right to update the information at any time without notice.