

APPLICATION NOTE

SHARING INTELLIGENT SOLUTIONS

KEY WORDS:

Title:	MRA And Labels
Products Applicable:	Multi Room Audio, DLT

One of the features of the Multi-room Audio System is the use of label messages to inform the user of what channel is being listened to. Until future products that understand Audio Application messages are developed, control of the MRA system is expected to be done via Lighting type Applications. The Matrix Switcher only communicates on the Audio Application, all of the Lighting to Audio translation is done in the amplifiers.

Changing Channels

Two methods of changing channels are provided in the MRA system.

- 1) Relative commands - Next and Previous.
- 2) Absolute commands – Set Absolute Channel 1 to 7

For these commands to be accepted by the Matrix Switcher, the associated group addresses and Lighting application must be setup in the amplifier.

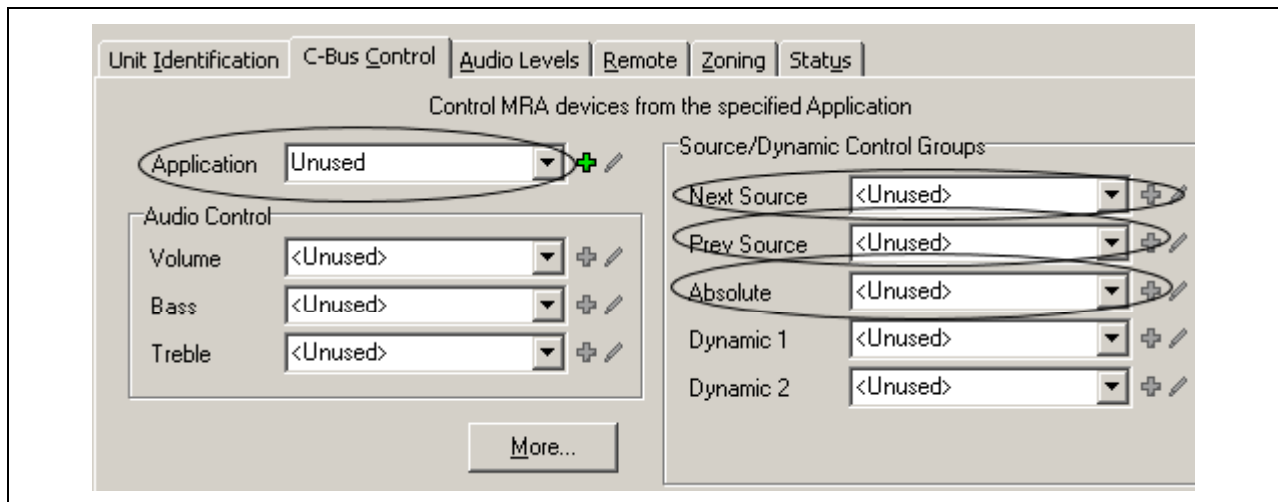


Figure 1: Addressing a MRA Amplifier.

To trigger the Next/Previous groups, an ON command is expected. The amplifier will automatically issue an OFF command on receipt of these messages. The amplifier will also issue a command on the Absolute source select group, if used, with a level corresponding to the source selected. The source selected will depend on the Matrix Switcher and its settings.

To control via the Absolute source select group, a set lighting level command is expected. Only levels 1% through to 7 % will be accepted, with the following level allocations corresponding to these sources:

- 1% - Amplifier local input
- 2% - 5% - Matrix Switcher analogue inputs 1 to 4
- 6% - Matrix Switcher digital audio port
- 7% - Matrix Switcher optical port

Labels

Labels for sources are setup in the Matrix Switcher using MARPA. Labels must be turned on for each zone that requires them. If a zone has nothing that uses labels, it is advisable to turn the labels off for that zone – it reduces C-Bus traffic peaks considerably. To turn a zone on to accept labels, check the indicated checkbox in MARPA.

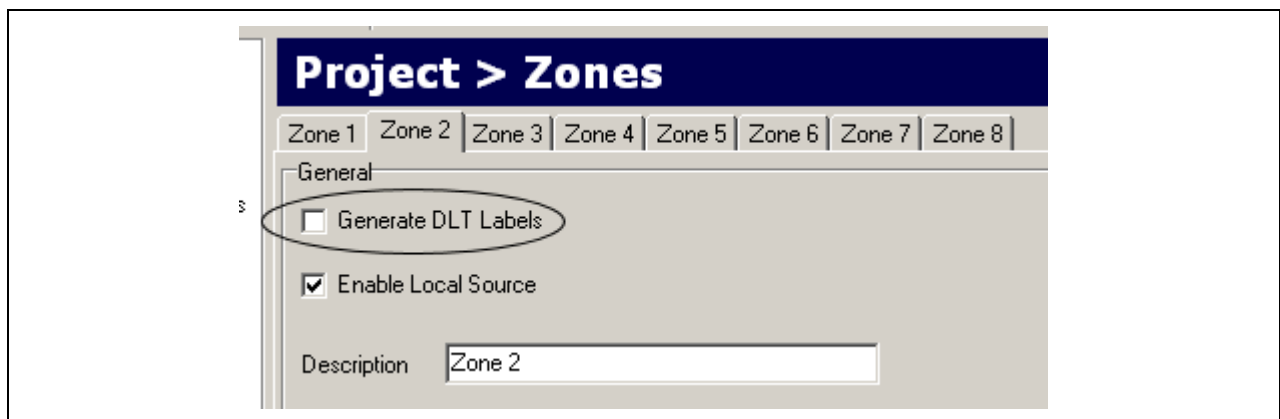


Figure 2: Select the Generate DLT Labels parameter.

A source description must also be entered if something other than the default is desired. Again this is done in MARPA.

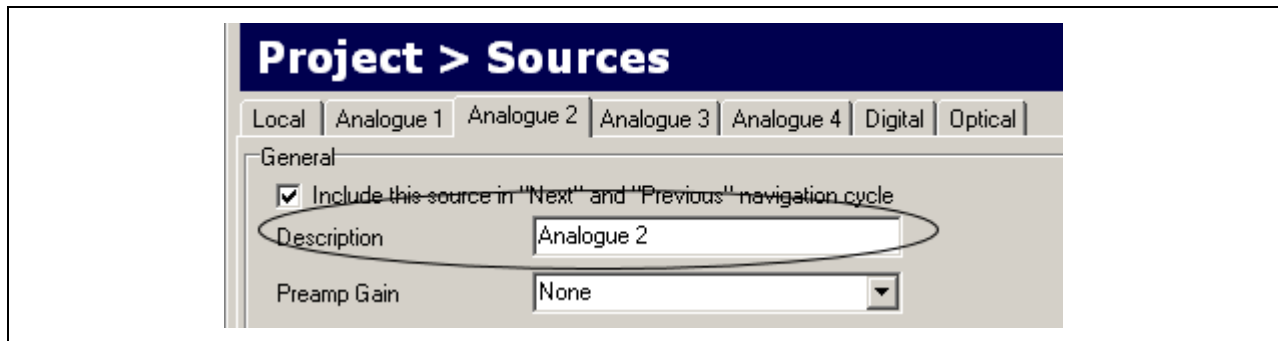


Figure 3: Enter source description.

When a source is changed, and the amplifier is configured with next/previous groups, a C-Bus labelling command will be issued on the 2 groups associated with the next and previous groups.



NOTES

If an Absolute source select command is used to control the source selection and you want the source labels, you will need to also allocate groups to at least the next or previous groups for the amplifier.

This also applies to the Dynamic button labels - a group must be assigned to these labels if you require the labels.

Technical Support and Troubleshooting

For technical assistance call: 1300 722 247 (Australia)
0800 888 219 (New Zealand)

CIS web site: <http://www.clipsal.com/cis/>

© Copyright Clipsal Integrated Systems Pty Ltd 2006. All rights Reserved. Clipsal Integrated Systems is a division of Clipsal Australia Pty Ltd ABN 27 007 873 529. This material is copyright under Australian and international laws. Except as permitted under the relevant law, no part of this work may be reproduced by any process without prior written permission of and acknowledgement to Clipsal Integrated Systems Pty Ltd.

Clipsal and C-Bus are registered trademarks of Clipsal Australia Pty Ltd.

The information in this document is provided in good faith. Whilst Clipsal Integrated Systems (CIS) has endeavoured to ensure the relevance and accuracy of the information, it assumes no responsibility for any loss incurred as a result of its use. CIS does not warrant that the information is fit for any particular purpose, nor does it endorse its use in applications which are critical to the health or life of any human being. CIS reserves the right to update the information at any time without notice.