

## APPLICATION NOTE

### SHARING INTELLIGENT SOLUTIONS

**NOTE #:** 06-043-1

**DATE:** 17 May 2006

**KEY WORDS:** C-Touch Colour  
Touchscreen, update,  
Service Pack 2

<b>Title:</b>	CTC Flash Card Replacement
<b>Products Applicable:</b>	5000CTC

## Warning

Incorrect removal of the C-Touch Colour (CTC) flash card may cause the loss of the current CTC project.

Incorrect insertion of the CTC flash card may cause permanent damage to the pins of the CTC flash card holder.

If you are unsure how to complete the following procedure, contact CIS Tech Support on 1300 722 247.

## Note

Additional information is provided in the help files located in the Piced folder on your computer. This is typically in C:\Clipsal\Piced\C-Touch Colour.hlp.

## Procedure

### 1. Transfer the project from the C-Touch Colour (CTC) to your laptop

If you do not have a backup of the project for the CTC you will need to download it from the CTC.

To do this:

- i) Connect the CTC to your Laptop using a crossover cable or hub.
- ii) Open the Start menu, Clipsal, Piced then open the C-Touch Colour Transfer Utility.
- iii) Connect to the unit.
- iv) Select the transfer tab.
- v) Select a destination folder in the "Transfer to Computer" field (such as C:\Clipsal\Piced\Projects).
- vi) Click the "Transfer Project to Computer" button.

## 2. Switch off the CTC

Remove the CTC from the wall box and disconnect the power cable to remove power from the unit.

## 3. Remove the old CTC flash card

Remove the "GUARANTEE VOID IF SEAL BROKEN" sticker that covers the CTC flash card (in this instance your warranty will not be void).

Carefully pull the CTC flash card out of the flash card holder (use medium force).

## 4. Install the new CTC flash card

Take extreme care:

- Ensure you are inserting the new CTC flash card labelled "update image software" 1350/3. The old CTC flash card is labelled "factory fitted software" 1350/1.
- Observe the position of the cream plastic guides of the flash card holder inside the CTC. Refer to Figures 1 and 2.
- Ensure the Clipsal "update image software" label on the CTC flash card faces the back of the unit. Refer to Figures 3 and 4.
- Place the CTC flash card into the cream plastic guides of the flash card holder inside the CTC. Refer to Figure 5.
- Before fully engaging the CTC flash card into the pins of the flash card holder check that it is correctly aligned. Refer to Figure 6.

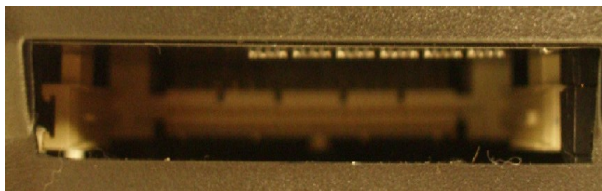


Figure 1

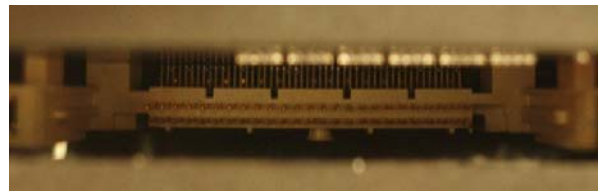


Figure 2



Figure 3



Figure 4



Figure 5



Figure 6

## 5. Switch on the CTC

Reconnect the power cable and ensure the CTC boots correctly. If the unit does not boot, the CTC flash card may have been inserted incorrectly. Repeat steps 2 to 4.

## 6. Place the new sticker over the CTC flash card

A "WARRANTY VOID IF REMOVED" sticker has been supplied with the replacement CTC flash card (the one labelled "update image software"). This must be placed over the inserted CTC flash card and housing similar to the placement of the "GUARANTEE VOID IF SEAL BROKEN" sticker which was removed.

## 7. Remount the unit in the wall box

## 8. Transfer the project from your laptop to the CTC

To do this:

- i) Connect the CTC to your laptop using a crossover cable or hub.
- ii) Open the C-Touch Colour Transfer Utility.
- iii) Connect to the unit.
- iv) Select the Transfer tab.
- v) Select a source file in the "Transfer to C-touch Colour" field (such as C:\Clipsal\PICED\Projects\project.cta)
- vi) Click the "Transfer Project to C-Touch Colour" button.
- vii) Once the project has been loaded, the unit may reset.

## 9. Reconfigure the unit

After the unit has reset you will need to:

- recalibrate the screen
- adjust the backlight control settings
- readjust any form sizes and positions that are used.

