

## APPLICATION NOTE

### SHARING INTELLIGENT SOLUTIONS

**NOTE #:** 06-056-1

**DATE:** 25 October 2006

**KEY WORDS:** plug adaptor, network bridge, wall switch

<b>Title:</b>	Controlling Wired C-Bus from a Wireless Remote
<b>Products Applicable:</b>	C-Bus Wireless and wired range

This Application Note will walk you through the process of controlling wired C-Bus from a C-Bus Wireless Remote Control. The example uses a relay plug adaptor, however any C-Bus Wireless wall switch or plug adaptor unit (dimmer or relay) may be used.

You will need the following equipment, a C-Bus Wireless:

- Gateway (5800WCGA)
- Remote Control (5888TXBA)
- Plug Adaptor (5812R10F1AA) (or other plug adaptor or wall switch).

You will also need to configure the gateway and wireless remote network in C-Bus Toolkit. This is done in the same way you would configure a local wired network to communicate with a remote wired network via a C-Bus Network Bridge (5500NB).

### Procedure

- 1) Connect the gateway to the wired C-Bus network, and plug the plug adaptor into mains.
- 2) Put the plug adaptor into Learn mode by holding both buttons for 10 seconds, then press the Learn button on the base of the gateway.
- 3) Hold one button on the plug adaptor and double press the other.
- 4) Hold the 2 buttons on the plug adaptor to exit Learn mode. The gateway and plug adaptor are now part of the same C-Bus Wireless network.
- 5) Open C-Bus Toolkit and scan the wired network as usual.
- 6) The function you will use in the Step 7 creates a new network using the same address value as the gateway's unit address. If necessary, use the Readdress function to change the unit address of the gateway to something more appropriate. Its value should not be 255, and must not have the same value as an existing network address. For example if you have a single local network with a network address of 254 (the default), ensure the gateway unit address is not set to 254. Refer to Figure 1.

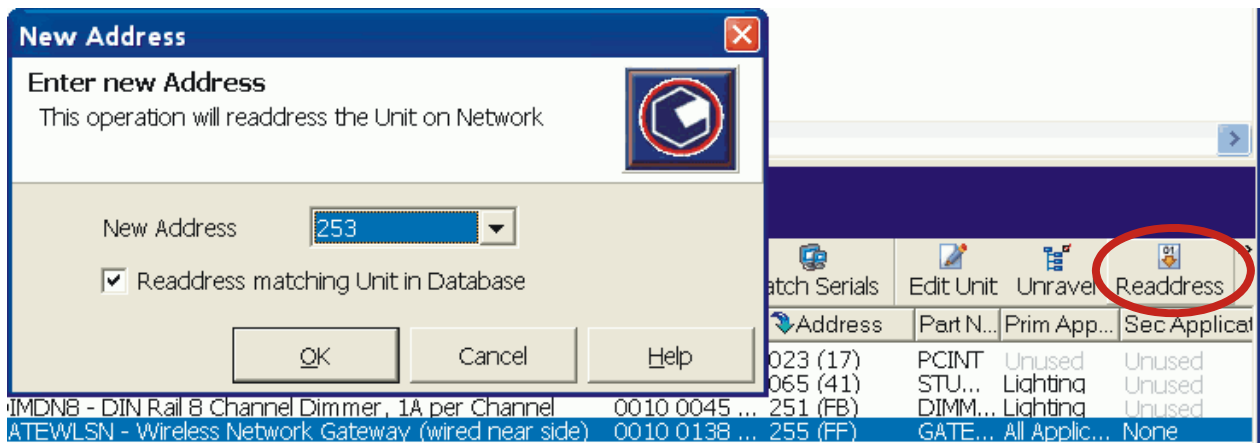


Figure 1 – If necessary, use the Readdress function to change the unit address to something appropriate

- 7) Select the gateway in the "Units on Network" window, and click "Make Network" on the tool bar. A new network will be created for the other side of the gateway. This is illustrated in Figure 2.

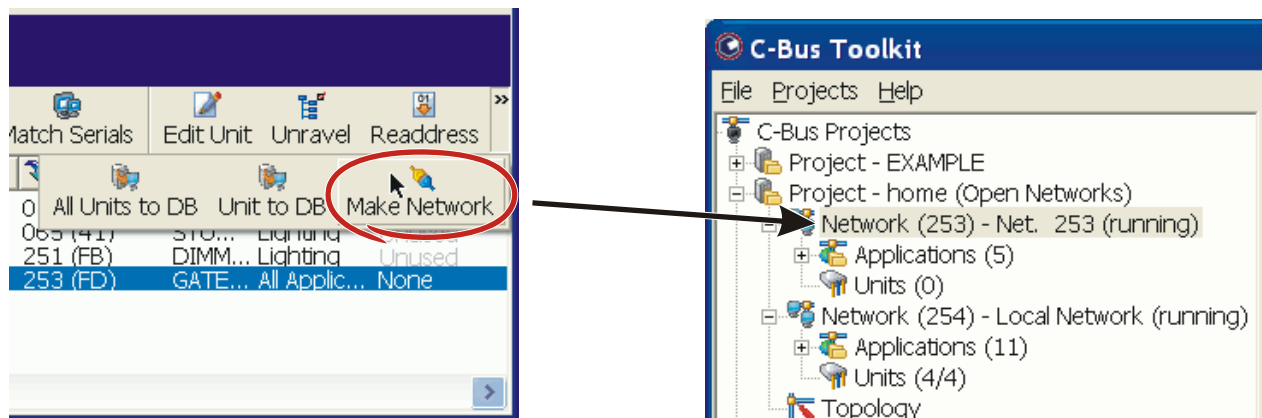


Figure 2 - Select the gateway and click "Make Network, to create a new network for the other side of the gateway

- 8) Click the Copy Tags button in the created network's tool bar (Figure 3).

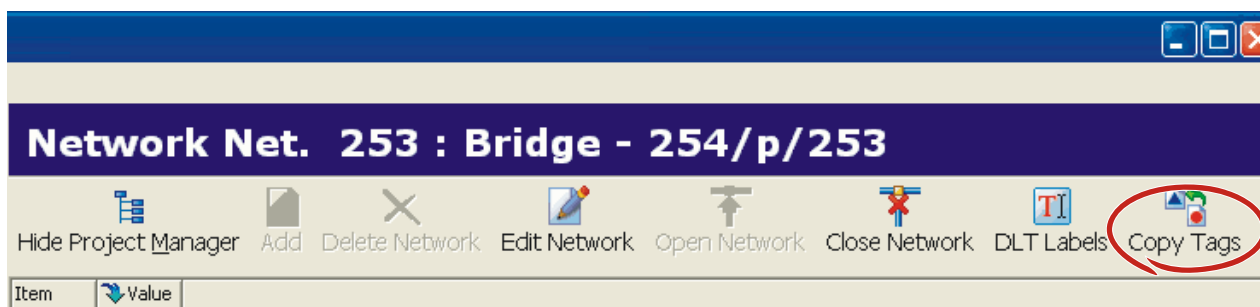


Figure 3 - Click the Copy Tags button in

- 9) Select the created network's Unit branch of the C-Bus Project tree, and Scan the wireless network. Edit the plug adaptor unit.
- 10) Select the groups you want to control and give them appropriate functions.

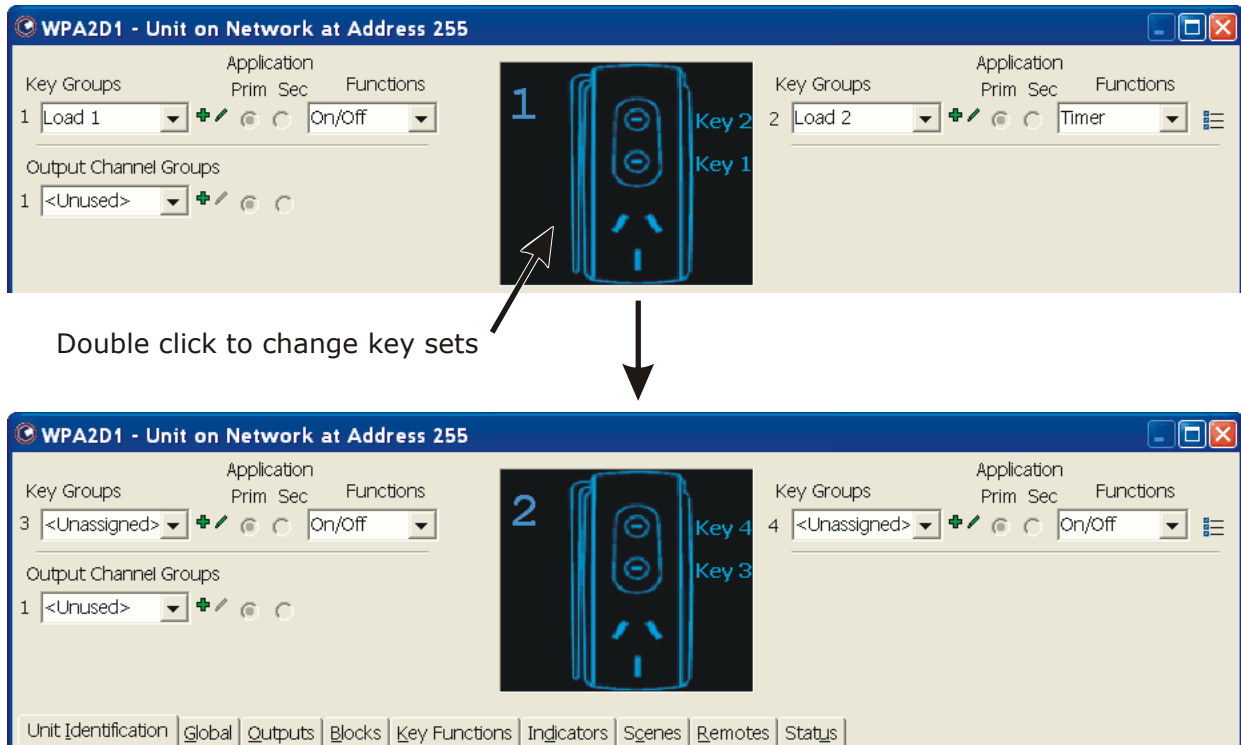


Figure 4 - Editing the plug adaptor. Double click the picture to change key sets

- 11) Select the next "key set" by double clicking the image of the plug adaptor (Figure 4). The number next to the image will increment. This provides access to more "virtual" buttons. There are four key sets in total, providing eight virtual buttons.
- 12) Once you have assigned the group addresses and functions you must assign the remote control to the plug adaptor. Select the Remotes tab and create a new remote by clicking the green "+" symbol. An editor will appear for the remote control unit (Figure 5).

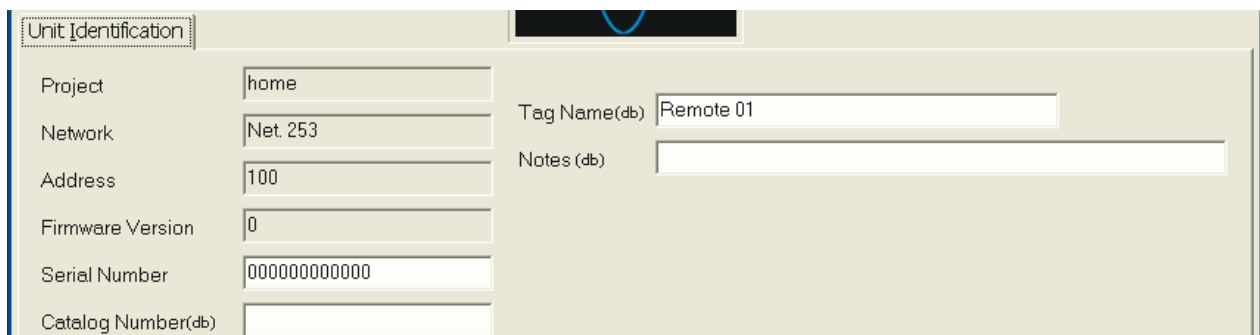


Figure 5 - The editor for the remote control unit

Give the remote a name, enter its serial number and click OK. The serial number can be found on the back of the unit under the cover. If a remote has already been assigned using Learn mode, it will show as such and will not need to be added.

- 13) Assign the buttons of the remote to the virtual keys of the plug adaptor (Figure 6).

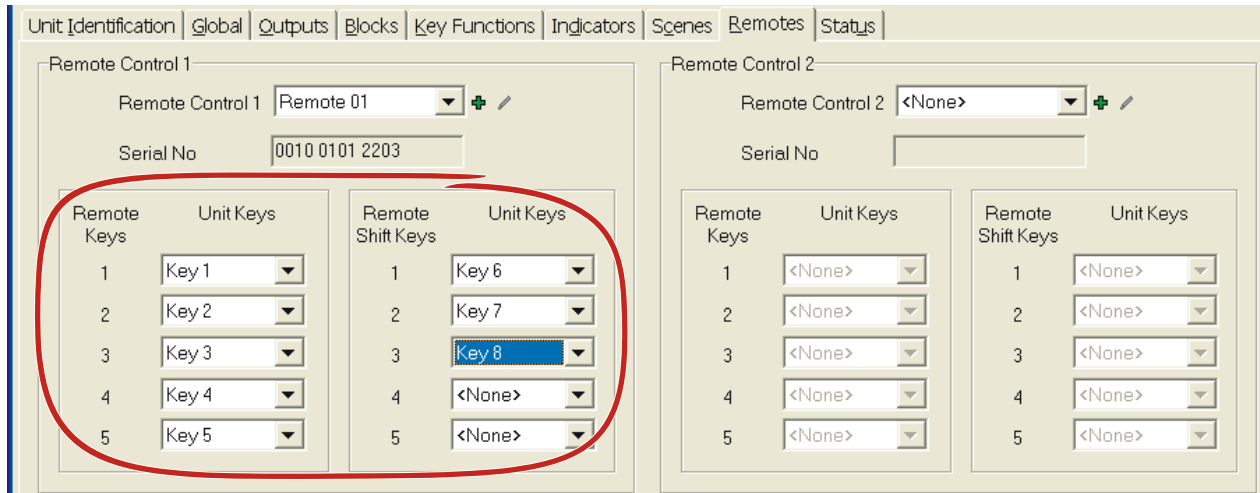


Figure 6 - Assign the buttons of the remote to the plug adaptor

- 14) Click "OK" and save to the unit. The remote control, will now operate the virtual keys in the plug adaptor, and react with the functions you assigned them. It will operate the group addresses on the wired network.

## Technical Support and Troubleshooting

For technical assistance call: 1300 722 247 (Australia)  
0800 888 219 (New Zealand)

Worldwide contacts: <http://www.clipsal.com/locations/>  
Information and resources: <http://www.clipsal.com/cis/>

© Copyright Clipsal Australia Pty Ltd 2006. All rights Reserved. This material is copyright under Australian and international laws. Except as permitted under the relevant law, no part of this work may be reproduced by any process without prior written permission of and acknowledgement to Clipsal Australia Pty Ltd.

Clipsal and C-Bus are registered trademarks of Clipsal Australia Pty Ltd.

The information in this document is provided in good faith. Whilst Clipsal Australia Pty Ltd (CAPL) has endeavoured to ensure the relevance and accuracy of the information, it assumes no responsibility for any loss incurred as a result of its use. CAPL does not warrant that the information is fit for any particular purpose, nor does it endorse its use in applications which are critical to the health or life of any human being. CAPL reserves the right to update the information at any time without notice.