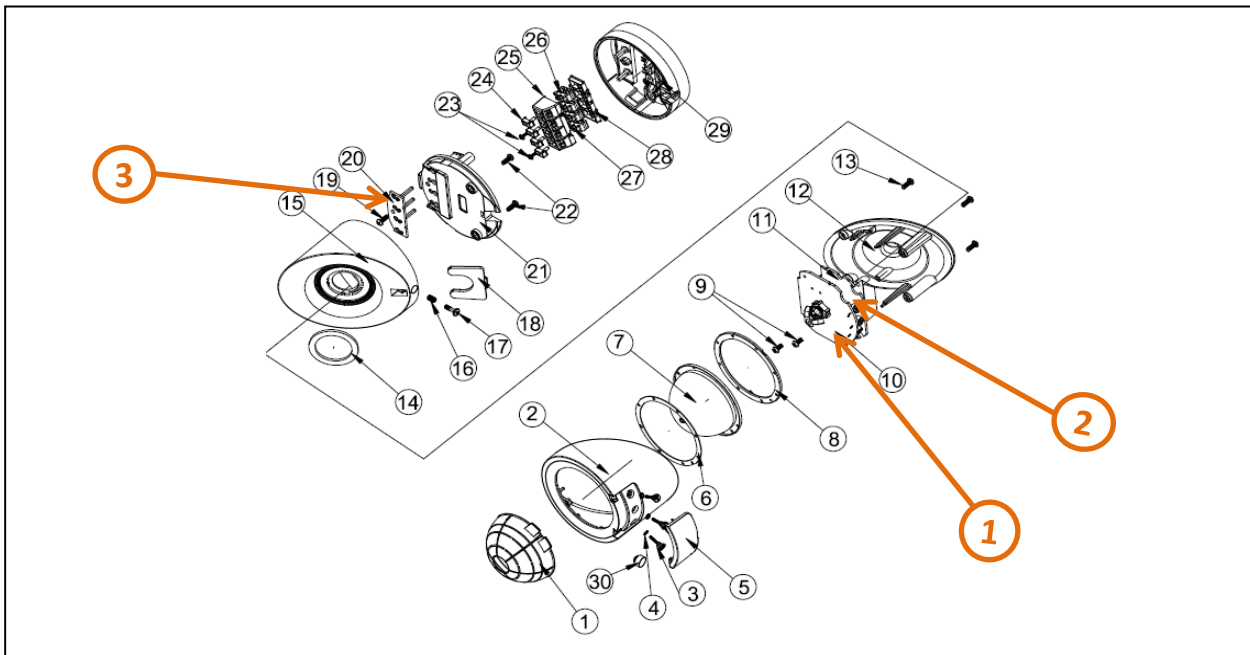


Product End of Life Instructions

Motion Sensor Outdoor, 360, white



End of Life Instructions



Recommendation	Number on drawing	Component / Material	Weight (in g)	Comment
To be depolluted	1,2,3	Electronic Board (Communication) > 10cm ²	65.24	Including all soldering parts

Product description

Manufacturer identification	Schneider Electric Industries SAS
Brand name	Schneider Electric
Product function	Motion Sensor Outdoor 360 reports the detection of movement and measures the luminance of the environment.
Product reference	CCT564119
Total representative product mass	240 g
Representative product dimensions	81mm x 106.6mm x 81mm
Accessories	No
Date of information release	2023/07

Additional information

Legal information	This product family is in the scope of European Union directive 2012/19/EU on Waste Electrical and Electronic Equipment (WEEE). The product family must be disposed according to the legislation of the country. This document is intended for use by end of life recyclers or treatment facilities. It provides the basic information to assure an appropriate end of life treatment for the components and materials of the product.
In case of special transportation: transportation method	No

Recyclability potential

9%

Recyclability rate has been calculated based on REEECY'LAB tool developed by Ecosystem, for components/materials not covered by the tool, data from the "ECO' DEEE recyclability and recoverability calculation method" was taken. If no data was found a conservative assumption was used (0% recyclability).

Schneider Electric Industries SAS
Country Customer Care Center
<http://www.schneider-electric.com/contact>
35, rue Joseph Monier
CS 30323
F- 92500 Rueil Malmaison Cedex
RCS Nanterre 954 503 439
Capital social 896 313 776 €

www.se.com

ENVEOLI2303011_V1

Published by Schneider Electric

© 2023 - Schneider Electric – All rights reserved

07-2023