

EDLT Button

Replacement Instructions

5080EDLBCPW 5080EDLBCHB
5080EDLBCEB 5080EDLBCAS

CLIPSAL
by Schneider Electric

For your safety

NOTICE

EQUIPMENT DAMAGE HAZARD

- Install the buttons according to instructions in this document.
- The product is suitable for indoor use only.

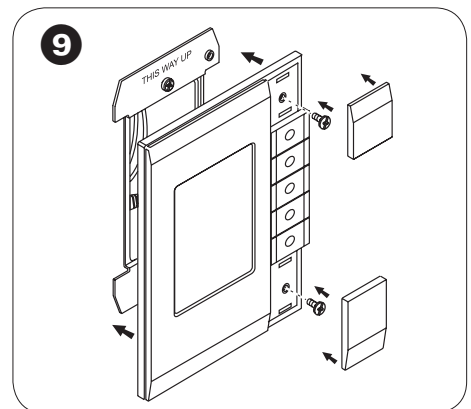
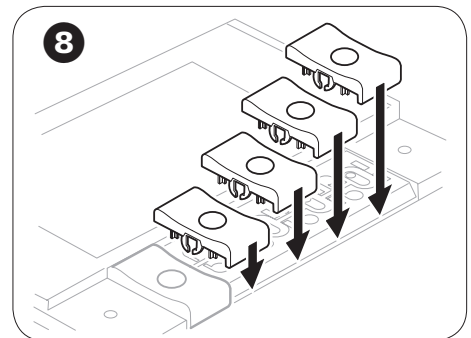
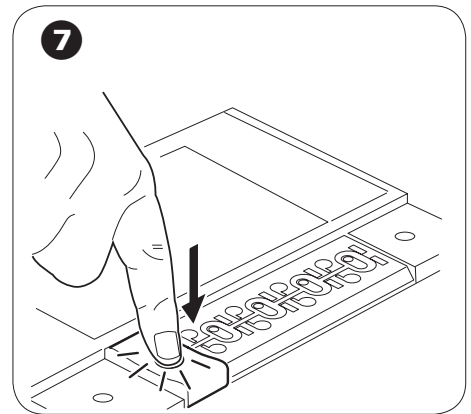
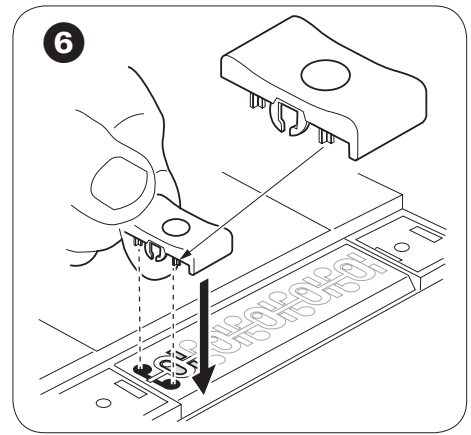
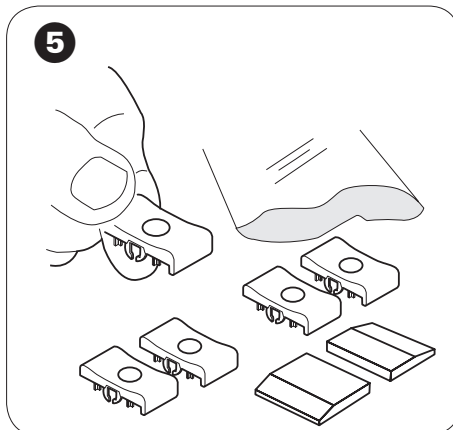
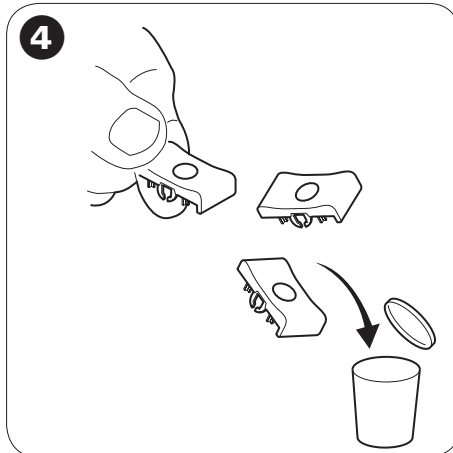
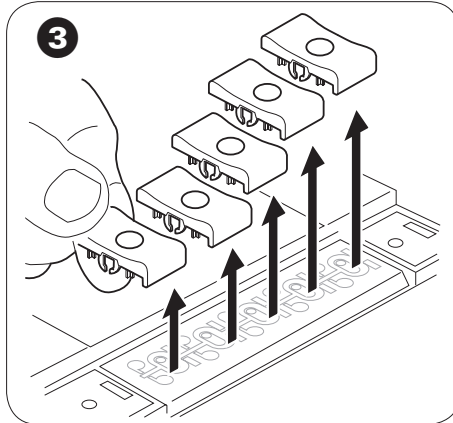
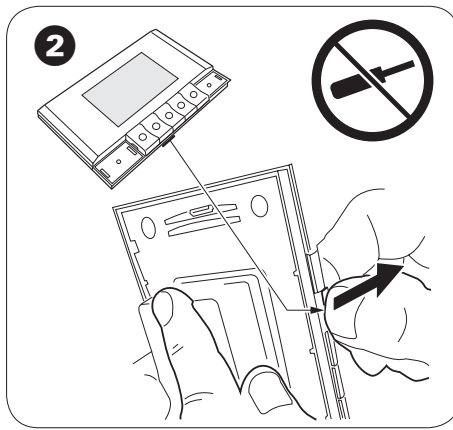
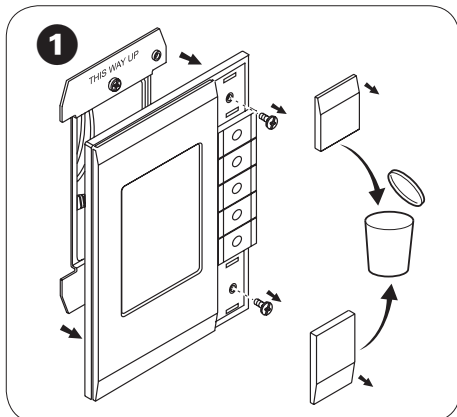
Failure to follow these instructions can result in equipment damage.

Installation

NOTE: You must replace all of the buttons, and the top and bottom end caps, during this procedure.

- 1 Remove the EDLT switchplate from the wall, discarding the top and bottom end caps.
- 2 Use a finger to gently lift the outer edge of a button until the button snaps off.

NOTE: Do not use any tools to prise the button off, as they may damage the product.
- 3 Repeat step 2 to remove the remaining buttons.
- 4 Discard all removed buttons as they cannot be re-used.
- 5 Take a new button from the packet.
- 6 Place the button into position, making sure the button lip is on the outer edge.
- 7 Press down on the button until both top and bottom clips click into place.
- 8 Repeat steps 5 to 7 for the remaining buttons.
- 9 Install the EDLT switchplate to the wall, then fit the new top and bottom end caps supplied.



Customer care

Warranty information

Refer to your local Schneider-Electric Customer care centre for full warranty conditions:

Schneider Electric (Australia) Pty Ltd

Customer Care Australia: 1300 369 233

www.schneider-electric.com.au

Schneider Electric reserves the right to change specifications, modify designs and discontinue items without incurring obligation and whilst every effort is made to ensure that descriptions, specifications and other information in this catalogue are correct, no warranty is given in respect thereof and the company shall not be liable for any error therein.

© Schneider Electric 2018

This material is copyright under international laws. Except as permitted under the relevant law, no part of this work may be reproduced by any process without prior written permission of and acknowledgement to Schneider Electric.